

# Link-It™ Manage Properties

**Link-It™ Manage Properties** is an extension to CAD system that makes it possible to manage all product item and CAD document attributes in one intelligent Data Form. Manage Properties guides the designer to define product data according to the design rules and terminology of your company. Manage Properties can be connected with your company's current data management systems like ERP, PDM, and PLM to streamline complicated design processes.

## Main features

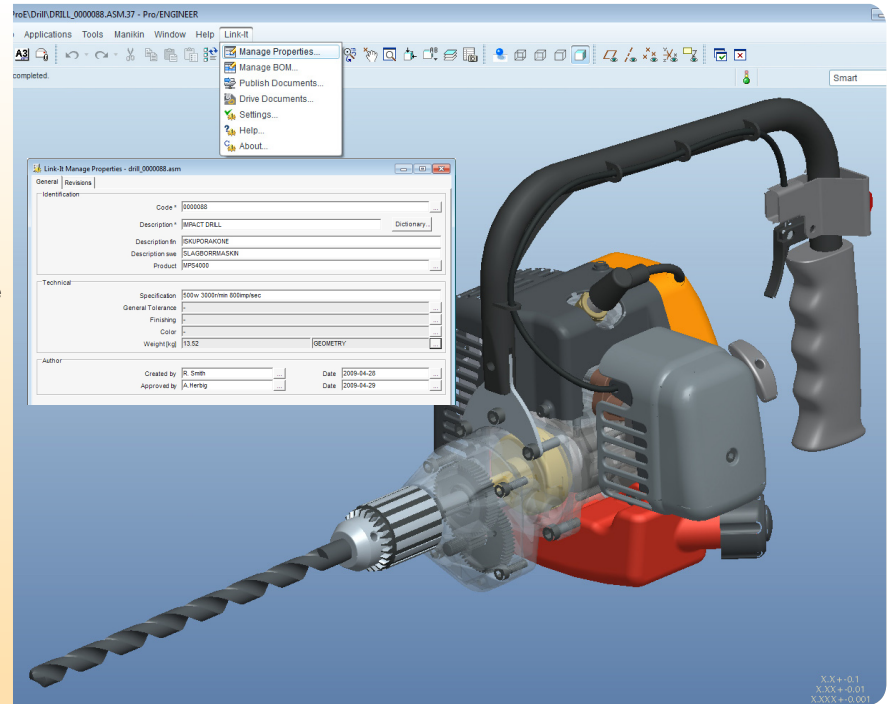
**Configurable:** The Manage Properties data form is fully adaptable to meet the needs of company-specific rules and processes.

**Integrable:** The Manage Properties data form can link with business system solutions such as ERP, PDM, and PLM.

**Extensive support:** Manage Properties is available for most popular CAD systems: Pro/ENGINEER, Creo Elements/Pro, SolidWorks, Autodesk Inventor, and AutoCAD.

### Benefits

- Speeds up and simplifies design work
- Manages data quality at an early stage
- Improves the traceability of product data between different systems
- Automates time-consuming and error-prone routine tasks
- Standardizes and streamlines design processes
- Reduces the need for complicated engineering instructions



## Seamless integration with your CAD system

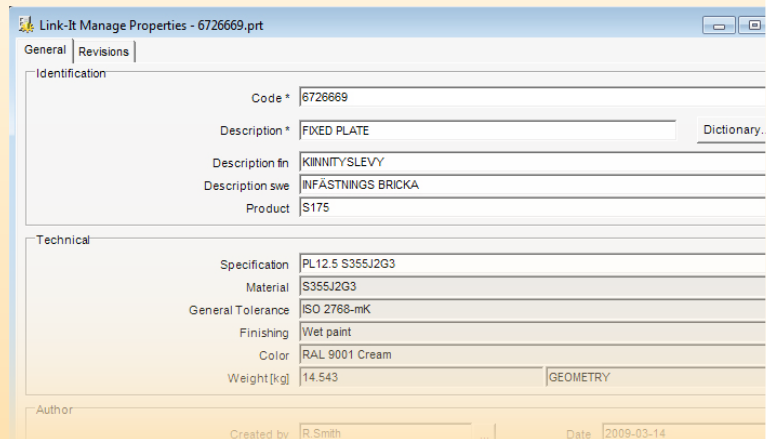
Link-It Manage Properties is integrated into CAD system's user interface. The data entered into the form is stored in the CAD file. Manage Properties fully supports each CAD system's native way to manage attribute data and part families inside the CAD file.

In a multi-CAD environment, one generic Manage Properties setup will link with multiple CAD systems, while fully utilizing their existing attributes as well as document and report templates.

CAD system	Method to manage attribute data	Method to manage part families
Pro/ENGINEER	User Parameter	Family table
Autodesk Inventor	iProperty	iPart, iAssembly
AutoCAD	Block attribute, X-Data	N/A
SolidWorks	Custom Property	Configuration table

### Link-It™ Manage Properties further saves time by automation that:

- Create new attributes to CAD document
- Remove disused attributes from CAD document
- Copy and join attribute values in CAD document
- Copy attributes between CAD model and drawing
- Link CAD attribute with model's color definition
- Link CAD attribute with model's material definition
- Link CAD attribute with model's weight definition
- Link CAD attribute with CAD document filename



## Features

### Data fields

Fields for user input. Configurable properties such as automatic data formatting, text length limit, drop-down menu, tool tip, default value, mandatory field, and trigger to execute function.

### Buttons

Execute custom functions.

### Frames

Organize data fields and buttons inside a frame line.

### Sheets

Divide data form into multiple sheets.

### Dictionary

Configurable database consists of the most common product descriptions in multiple languages.

### Revision table

Documents the revision changes.

### Search forms

Search and get item data directly from external data management systems such as ERP, PDM, and PLM.

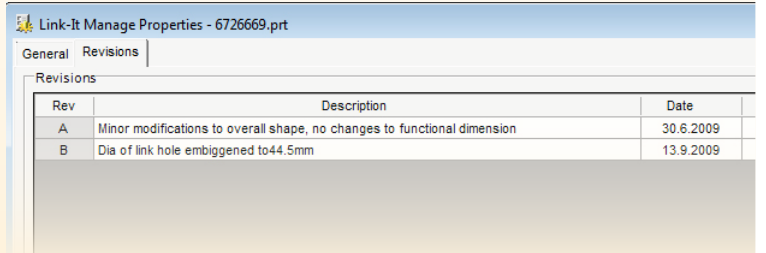
### Number generator

Generate and manage unique codes.

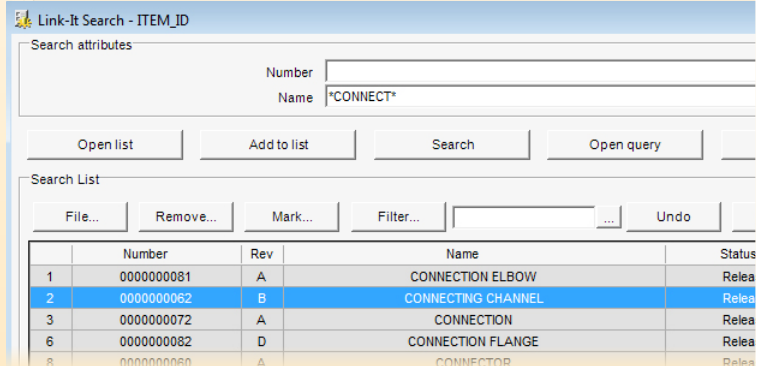
### Rules

Rule is a powerful and simple way to embed intelligence and automation into data form. A typical rule contains one or several logical expressions that evaluate user input, and sets properties of other data fields according to result. For instance, a rule can define that a certain value inputted to one data field causes some other field to disappear or change the content in a drop-down menu.

Rules are also often used to automate data input. A rule can, for example, gather values from several input fields and combine them automatically as a new value for some other field.



Rev	Description	Date
A	Minor modifications to overall shape, no changes to functional dimension	30.6.2009
B	Dia of link hole embiggened to44.5mm	13.9.2009

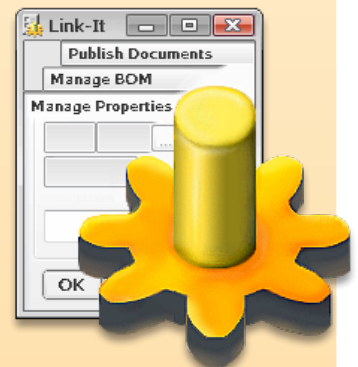


Number	Rev	Name	Status
000000081	A	CONNECTION ELBOW	Relea
000000062	B	CONNECTING CHANNEL	Relea
000000072	A	CONNECTION	Relea
000000082	D	CONNECTION FLANGE	Relea
000000060	A	CONNECTOR	Relea

### Custom functions

Custom functions can be used to improve the functionality and automation of the data form. A function call can be linked directly to an action button, a drop-down menu or a data field of the data form.

With custom functions you can establish simple one-directional or advanced bidirectional links with any system that supports SQL, XML, MS Excel or simple text file based data transfer. No special programming skills or tools are required to customize functions, as they use an easy-to-understand script language and can be modified with any common text editor.



**Link-It™ Manage Properties** software is installed on a server that allows CAD workstations to access it centrally. Upgraded settings or configurations are immediately available to all users, including other CAD program users.

**Link-It™ Manage Properties** is available for the following CAD systems: Pro/ENGINEER, Creo Elements/Pro, SolidWorks, Autodesk Inventor, and AutoCAD.



**s o f t**

Technology for higher productivity

*MP Soft Oy is a software company that serves the manufacturing industry. We create integrable software solutions for CAD systems that improve the productivity and quality of mechanical design. Our solutions streamline design processes complicated by different information systems and rules. Our customers have pointed out that our Link-It™ solutions have noticeably improved designer productivity and motivation as well as data quality.*