

Optimizing the New Product Introduction (NPI) Process

How Windchill ProjectLink Automates and Facilitates Stage-Gate & PACE Process Execution and Visibility

Delivering a variety of comprehensive, best-practice project templates, Windchill ProjectLink facilitates the adoption, speed, and repeatability of NPIs across an organization.

Competitive pressures, cost challenges and increased customer requirements / expectations are driving companies to improve their new product introduction processes, and execute NPIs much more effectively. While methodologies such as PACE, Stage-Gate®, and others are helping companies formalize and improve this critical process, they only take you so far.

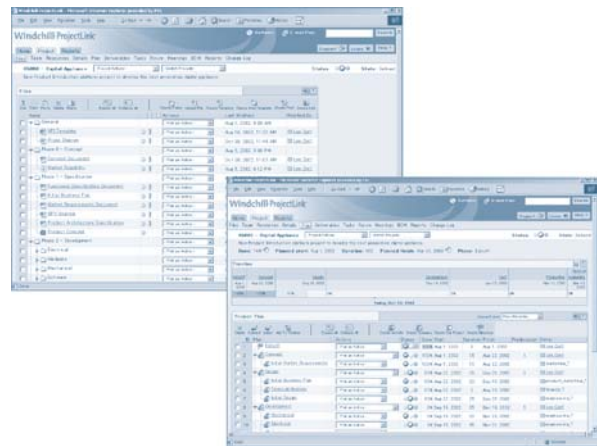
What's missing is a tool that enables all constituents to speak a common language, automate and streamline the process, expose performance bottlenecks, drive consistent execution and continuous improvement, and provide management visibility into the product development pipeline. That tool is Windchill ProjectLink, PTC's premier solution for managing product development projects.

Windchill ProjectLink captures and automates the NPI process electronically, so you can reduce non-value added paperwork associated with creating, managing and sharing project information and deliverables.

Windchill ProjectLink connects all project team members and sponsors thru a Web-based virtual workspace. Launching new projects is easy; a user logs on, sets up the project from a customer-defined template, invites members and the team is off and running, with minimal IT support.

Here's how Windchill ProjectLink helps project teams accelerate the NPI process:

- Provide current project data and real time visibility into performance metrics and project status to all members and executive sponsors
- Accelerate benchmarking opportunities, leverage best practices and execute projects by providing common virtual workspaces for both internal cross functional team members and external constituents (suppliers, partners, customers)
- Increase the number of projects completed successfully by providing all the necessary tools to execute, including a repeatable customer defined New Product Introduction project template, which maps and automates the organization's specific business process
- Reduce non-value added data management and project administration activity freeing up more time for customer input and product innovation



Tracking project status and accessing information has never been easier or more accurate; reporting mechanisms and status indicators raise flags; management can research problems

Capabilities Overview

- Self-service project management, enabling users to track milestones, activities, tasks, deliverables, and resources across all phases of the NPI process
- Central repository for all project-related information
- Lightweight visualization and markup of information from various CAD authoring tools
- Streamlined process management and document approval routings through automated workflow
- Change visibility through subscription and notification
- Discussion forums
- Online collaborative design review and phase review meetings

Project Management

Windchill ProjectLink provides closed-loop project management. The project owner sets up a schedule; the entire team accesses it and directly report their progress. The most up-to-date information is always available to all parties. Features include:

- Deliverables-based project management
- Configurable and reusable project templates
- Automated delivery and execution of scheduled activities
- Hierarchy of projects; roll-up to a master project/cluster

- Import of a Microsoft® Project plan
- Export of a Windchill ProjectLink project plan
- Executive dashboard with essential project information
- Tracking of total project costs, resources, and efforts
- Action item capture and resolution management
- Configurable timeline with status of key events

Program and Portfolio Management

Windchill ProjectLink offers both a pipeline view and portfolio view across projects. Managers and executives can quickly identify issues through consolidated views and graphical indicators, then generate reports in real-time based on actual current project information. Additional capabilities are available with an optional Portfolio Management Reporting solution.

Information Management

Windchill ProjectLink can manage a vast range of information regardless of systems, organizational differences, or geographic boundaries. Participants can author, access, and manage this data so that the right information is available when team members need it. Specific capabilities include: folder-based storage and controlled access to project information; check-in/check-out; change history; document templates; automated or ad hoc routing of documents for review/approval; access control rules for individual documents, parts, and folders; lightweight visualization and markup; discussion forums; personal notebook to manage links to important information; and URL links of project information to/from other projects, corporate enterprise systems, and other exchanges.

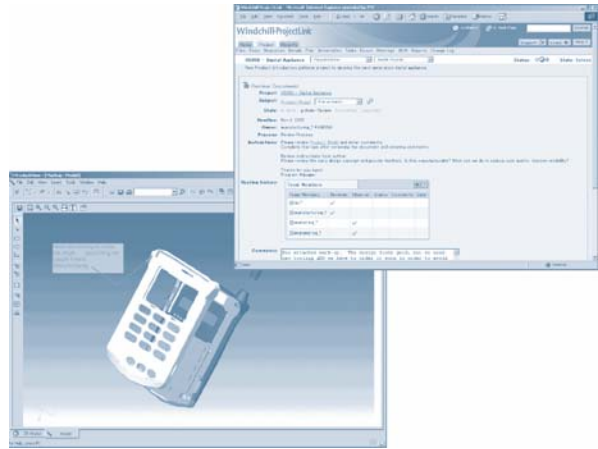
CAD Integration

Windchill ProjectLink is capable of managing collaboration around extremely complex 2D/3D information from many CAD applications.

- Direct integration from leading CAD authoring tools such as Pro/ENGINEER®, Cadence®, CATIA®, AutoCAD®, I-DEAS®, Mentor®, Inventor®, SolidWorks®, and Unigraphics®
- Product structure management
- Visualization and markup of 2D/3D data
- Peer-to-peer collaboration with visualization software

Automate Business Processes

Windchill ProjectLink employs a powerful workflow engine that automates many business processes to streamline execution and repeatability while removing distance barriers. Reusable workflow templates automate common processes and enforce the execution of key activities such as best practices benchmarking and project leveraging. Tailorable forms define process tasks and tie together relevant information. Moreover, Windchill ProjectLink allows automatic distribution of



Easily view, modify, mark up, and route project data such as designs and gate-review packages

tasks to team members, and the utilization of deadlines with escalation policies for proactive and follow-up notifications. The ability to reassign tasks help project leaders relieve bottlenecks and facilitate workflow. There are even advanced workflow capabilities, including support for nested processes, process referencing, conditional branching, voting, synchronization, timers, iterative loops, and response-based routing.

Scalable and Secure

Windchill ProjectLink is fully scalable, capable of handling hundreds—even thousands—of concurrent users. Support for Oracle and Java 2 enables maximum performance advantages. It offers three levels of security, essential for managing projects on the Internet:

- **User Authentication:** Uses standard Web server authentication
- **Project Access:** Allows you to seal off activity around discrete projects
- **File Access:** Enables data owners and project managers to set access control rights for individual folders, documents, parts, and CAD models

Copyright ©2005, Parametric Technology Corporation (PTC)—All rights reserved under copyright laws of the United States and other countries. Information described herein is furnished for informational use only, is subject to change without notice, and should not be construed as a guarantee, commitment, condition or offer by PTC. PTC, the PTC Logo, The Product Development Company, Product First, Create Collaborate Control, Simple Powerful Connected, Pro/ENGINEER, Wildfire, Windchill, Windchill PDMLink, Windchill ProjectLink, Windchill PartsLink, Windchill DynamicDesignLink, and all PTC product names and logos are trademarks or registered trademarks of PTC and/or its subsidiaries in the United States and in other countries.