

# Windchill® Workgroup Manager for ECAD

**Faster, easier collaboration on electrical PCB design data**

Adding electrical computer-aided design (ECAD) data to Windchill® creates a full product definition, thus improving collaboration and reducing the chances for error due to incomplete or out-of-date information.

By combining the heterogeneous CAD capabilities of Windchill with PTC's proven ECAD-related tools, you can now capture, control, and share complex design information from different ECAD/MCAD packages within a single enterprise environment, and even within a single product structure.

## Key Benefits

### Improve Collaboration

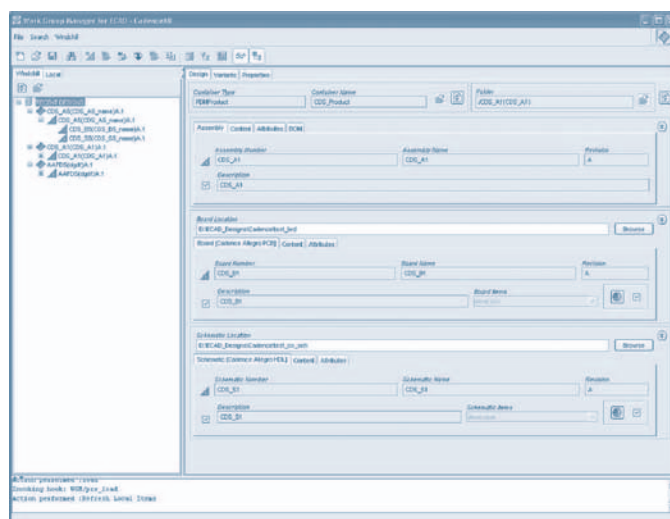
- Share critical design information throughout both the enterprise and the extended value chain, while still maintaining complete access control
- Facilitate design collaboration and data management via a single, central repository provided by Windchill
- Optionally enable communication between users via centrally available markups

### Reduce Errors

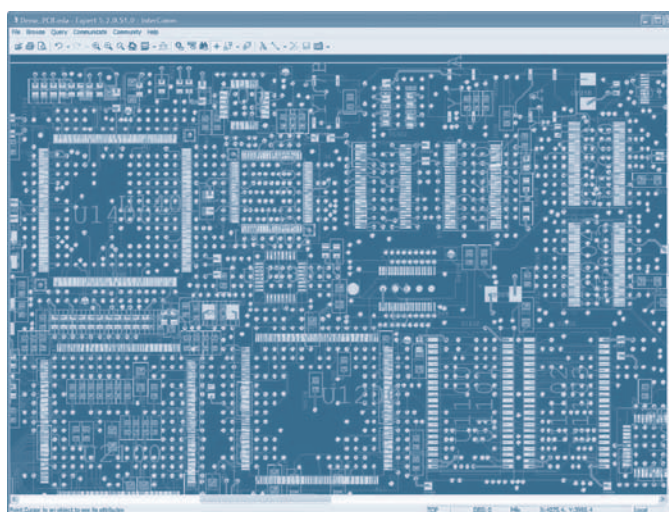
- Precisely control versions of native ECAD data while reducing the risk of using out-of-date product information
- Enforce standard design processes
- Optionally eliminate manual spot-checking of ECAD designs

### Improve Engineer Efficiency

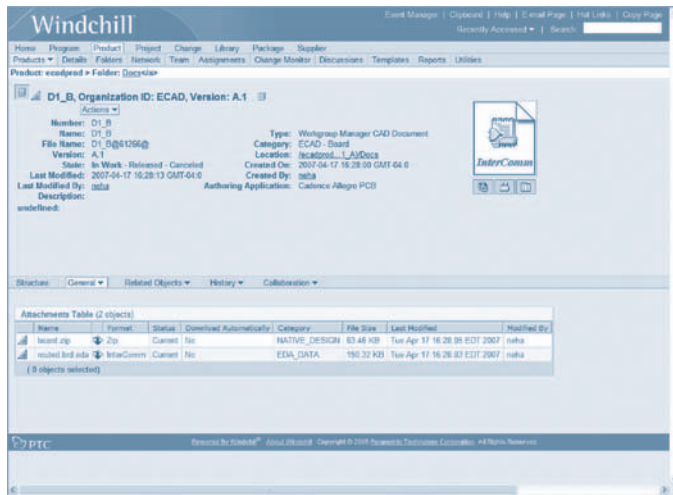
- Increase the reuse of existing designs
- Eliminate redundant design steps
- Optionally allow individual contributors to review ECAD designs as they become available



Display board and schematic information with the Windchill Workgroup Manager for ECAD user interface.



Optionally display viewable data generated via the Windchill Workgroup Manager for ECAD.



ECAD data can now be stored within Windchill® PDMLink®.

## Features

### Integral Product Data Management

- Enable non-ECAD application users to access, markup and collaborate on critical electrical design data
- Manage version-specific information of any authoring ECAD application with specifications, text documents and any other product-related information to facilitate search and retrieval
- Enable users to organize and manage derived design information, such as artwork, drawings and IDF files, within Windchill
- Synchronize the enterprise BOM with the electrical design BOM to eliminate redundancies and errors, and provide reports and “where-used” searches
- Generate normalized, lightweight, viewable representations for simple design collaboration within Windchill

### Configuration Management

- Access Windchill directly from within the ECAD application menu and while providing versioning and iteration management
- Enable check-in and check-out of latest configurations
- Share electrical data within Windchill across different “contexts” (e.g., products, libraries and projects) for true collaboration in an access-controlled environment
- Achieve direct integration with the process management capabilities of Windchill, such as change management and product release processes
- Revise electrical design data managed in Windchill directly from within the Workgroup Manager interface

### Extensibility

- Apply extensive customization tools to execute any customer-defined processes, such as design simulation and data clean-up
- Consolidate BOM creation and work with a “clean” BOM in the Windchill environment
- Work within a common user interface that supports multiple ECAD authoring solutions
- Extract single or variant Bill of Materials from design data, and publish to Windchill
- Provide notification to users of valid design data that resides on their desktop

### Platform Specifications

- Prerequisite: Windchill PDMLink, Windchill® ProjectLink™
- Server Operating Systems
  - Microsoft Windows: Windows 2003 Server (32-bit and 64-bit)
  - Unix: Solaris, HP-UX, AIX
  - Linux (64-bit): Red Hat Enterprise Linux 4
- Client Operating Systems
  - Microsoft Windows: XP, 2000
  - Unix: Solaris
- Browser: Internet Explorer v 6.0 and 7.0, Mozilla Firefox v2.0 and higher
- Database: Oracle 10g and SQL Server 2005
- Languages: English

For the most up-to-date platform support information, please visit [www.ptc.com/partners/hardware/current/support.htm](http://www.ptc.com/partners/hardware/current/support.htm)

Copyright 2007, Parametric Technology Corporation (PTC). All rights reserved. Information described herein is furnished for informational use only, is subject to change without notice, and should not be construed as a guarantee, commitment, condition or offer by PTC. PTC, Windchill, and all PTC product names and logos are trademarks or registered trademarks of PTC and/or its subsidiaries in the United States and in other countries. All other product or company names are property of their respective owners.