

Streamlining the Advanced Product Quality Planning (APQP) Process

Automate and Facilitate APQP Project Execution and Management Visibility

With comprehensive best-practice project templates, Windchill ProjectLink facilitates the adoption, speed, and repeatability of the APQP process across an organization.

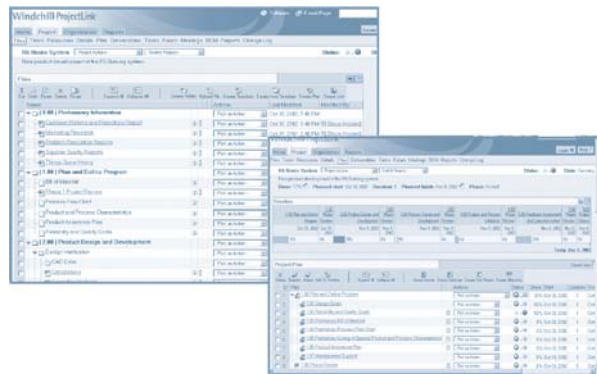
Industry watchdogs state that, applied correctly, the APQP methodology can yield major benefits in cost savings, quality and time-to-market. However, complying with APQP requirements requires a tremendous effort and expense in maintaining documentation, managing process requirements, and orchestrating complex programs. In fact, the costs to the supply chain alone this year are nearing \$6 billion (US). There's a less expensive, easier way to achieve APQP. It's called Windchill ProjectLink, from PTC.

Windchill ProjectLink is a proven collaborative project execution tool that provides a central information repository within a decentralized, real-time project management environment. It features an AIAG-compliant APQP project template that was designed and architected by PTC working closely with automotive suppliers expert in APQP processes. This unique template helps automotive suppliers streamline and execute APQP projects so they can get higher quality products to market faster, at lower cost.

With Windchill ProjectLink, your project team members and sponsors are easily connected via a Web-based virtual workspace. Launching new projects is easy: a user logs on, sets up the project from a customer-defined template, invites members, and the team is off and running, with minimal IT support.

Windchill ProjectLink Supports APQP initiatives with the following capabilities:

- Provide current project data and real time visibility into performance metrics and project status to all members and executive sponsors
- Accelerate benchmarking opportunities, best practice leveraging and project execution by providing common virtual workspaces for both internal cross-functional team members and external constituents (suppliers, partners, customers)
- Increase the number of projects completed by providing all the necessary tools to execute, including a repeatable customer defined APQP template, which maps and automates the organization's specific process



Tracking project status and information has never been easier or more accurate; mechanisms and status raise flags; management can research problems

- Reduce non-value added data management and project administration activity freeing up more time for process optimization and systemic improvements

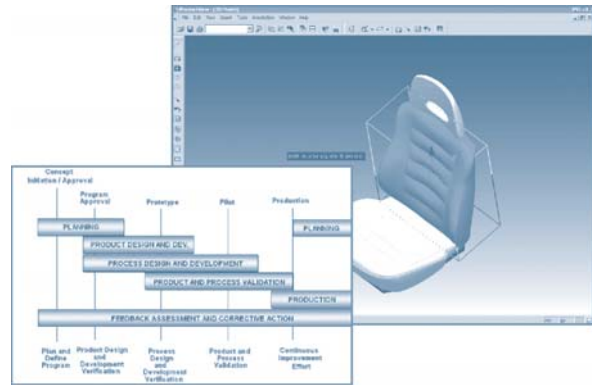
Capabilities Overview

- Self-service project management, enabling users to track milestones, activities, tasks, deliverables, and resources across all phases of the APQP process
- Central repository for all project-related information
- Lightweight visualization and mark-up of information from various CAD authoring tools
- Streamlined process management and document approval routings through automated workflow
- Change visibility through subscription and notification
- Discussion forums
- Online collaborative meetings

Project Management

Windchill ProjectLink delivers closed-loop project management: the project owner set up a schedule. The entire team accesses it via the Web and directly reports their progress. As a result, the most up-to-date information is always available to all parties. Features include:

- Deliverables-based project management
- Configurable and reusable project templates
- Automated delivery and execution of scheduled activities
- Hierarchy of projects & roll-up to a master project / cluster
- Import of a Microsoft® Project plan
- Export of a Windchill ProjectLink project plan
- Executive dashboard with essential project information
- Total project cost, resource, and effort tracking
- Action item capture and resolution management
- Configurable timeline with status of key events



Easily view, modify, and mark up project data such as process capability charts and parts.

Program Management

Windchill ProjectLink offers both a pipeline view and portfolio view across projects. Managers and executives can quickly identify issues through consolidated views and graphical indicators, then generate reports in real-time based on actual current project information.

Information Management

Windchill ProjectLink can manage a vast range of information regardless of systems, organizational differences, or geographic boundaries. Participants can author, access, and manage this data so that the right information is available when team members need it. Specific capabilities include: folder-based storage and controlled access to project information; check-in/check-out; change history; document templates; automated or ad hoc routing of documents for review/approval; access control rules for individual documents, parts, and folders; light-weight visualization and markup; discussion forums; personal notebook to manage links to important information; and URL links of project information to/from other projects, corporate enterprise systems, and other exchanges.

CAD Integration

Windchill ProjectLink is capable of managing collaboration around extremely complex 2D and 3D design information from many CAD applications.

- Direct integration from leading CAD authoring tools such as Pro/ENGINEER®, Cadence®, CATIA®, AutoCAD®, I-DEAS®, Mentor®, Inventor®, SolidWorks®, and Unigraphics® for viewing and editing
- Product structure management
- Visualization and mark-up of 2D and 3D data
- Peer-to-peer collaboration with visualization software

Automate Business Processes

Windchill ProjectLink employs a powerful workflow engine that automates many business processes to streamline execution and repeatability while removing distance barriers. Reusable workflow tem-

plates automate common processes and enforce the execution of key activities such as best practices benchmarking and project leveraging. Tailorable forms define process tasks and tie together relevant information. Moreover, Windchill ProjectLink allows automatic distribution of tasks to team members, and the utilization of deadlines with escalation policies for proactive and follow-up notifications. The ability to reassign tasks help project leaders relieve bottlenecks and facilitate workflow. There are even advanced workflow capabilities, including support for nested processes, process referencing, conditional branching, voting, synchronization, timers, iterative loops, and response-based routing.

Communication

With Windchill ProjectLink, project team members can instantly share ideas and build off the input of each other with features including:

- Discussion Forums
- Online Meetings
- Subscription and Notification

Scalable and Secure

Windchill ProjectLink is fully scalable, capable of handling hundreds—even thousands—of concurrent users. Support for Oracle and Java 2 enables maximum performance advantages. It offers three levels of security, essential for managing projects on the Internet:

- User Authentication: Uses standard Web server authentication
- Project Access: Allows you to seal off activity around discrete projects
- File Access: Enables data owners and project managers to set access control rights for individual folders, documents, parts, and CAD models

Copyright ©2005, Parametric Technology Corporation (PTC)—All rights reserved under copyright laws of the United States and other countries. Information described herein is furnished for informational use only, is subject to change without notice, and should not be construed as a guarantee, commitment, condition or offer by PTC. PTC, the PTC Logo, The Product Development Company, Product First, Create Collaborate Control, Simple Powerful Connected, Pro/ENGINEER, Wildfire, Windchill, Windchill PDMLink, Windchill ProjectLink, Windchill PartsLink, Windchill DynamicDesignLink, and all PTC product names and logos are trademarks or registered trademarks of PTC and/or its subsidiaries in the United States and in other countries.