

# Windchill® Supplier Management

Manage, analyze and communicate supply chain and compliance-related information

Most manufacturing companies today are facing a major hurdle in selecting the optimal suppliers for products that involve multiple lines, programs, and geographies. Making the wrong choice can have huge implications in product cost and time-to-market.

Windchill Supplier Management from PTC establishes a key link between your design and downstream functions such as procurement, sourcing and manufacturing. The result: designers have instant access to critical supply chain and compliance information during the component selection process, which means better, more cost-effective decisions—right from the outset of the development process.

## Key Benefits

### Lower Costs

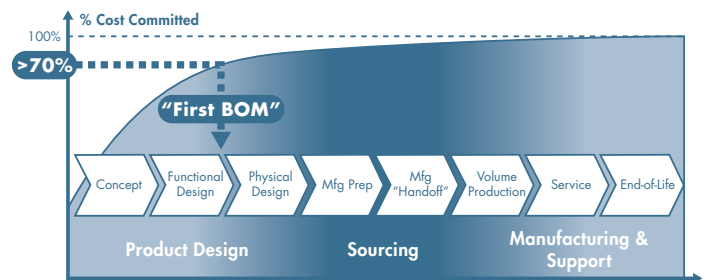
- Re-use preferred parts for new designs, optimized by geography, product line, program, and department
- Secure volume pricing by leveraging preferred suppliers

### Shorten Time-to-Market

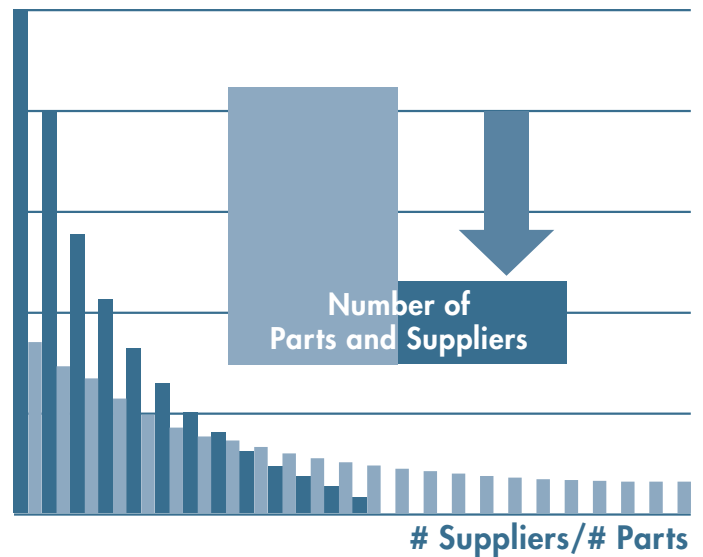
- Prevent errors and redesigns by involving suppliers early in the design process
- Eliminate the use of “hard to get” or obsolete commercial parts in new designs

### Meet the Demands of Complex, Global Supply Chains

- Optimize manufacturer part sources and vendor selection with approved Manufacturer and Vendor Lists
- Improve supply chain communication and collaboration with a secure, Web-based project portal
- Gain control of complete enterprise component record by creating a single secure content vault
- Extend change management best practices to encompass suppliers and manufacturers



By engaging outsourced manufacturers and vendors early in the design process, companies can lower development costs dramatically.



By reducing the number of suppliers and parts, you lower costs significantly.

### Improve Quality

- Improve product quality by re-using known-quality parts and by managing part preferences
- Minimize design and manufacturing errors by using approved suppliers and manufacturers
- Decrease design errors by establishing a standardized Manufacturing Change Order process with outsourcing partners
- Reduce outsourced product errors both by markup and by applying changes to manufacturer parts, vendor parts, and preferences

## Features

### Approved Manufacturer and Vendor Lists (AML/AVL)

- Define one or more manufacturer parts that can be used for a company's internal part
- Define one or more vendor parts that can be used for a company's internal part

### Define and Classify Manufacturer and Vendor Parts

- Define detailed functional characteristics
- List hazardous material content
- Identify cost and availability
- Record lifecycle risk information
- Include all associated documents

### Standardize Processes

- New Part Request process provides a standard approach for creating a company's internal part number with all of the required information such as manufacturer and vendor information
- Manage supplier introduction with workflows

### Part Preferences

- Assign part preferences based on unlimited contexts such as product line, lifecycle, location or function

### Load supplier information

- Easily import and export supplier part information with Microsoft Excel

### Part Grading

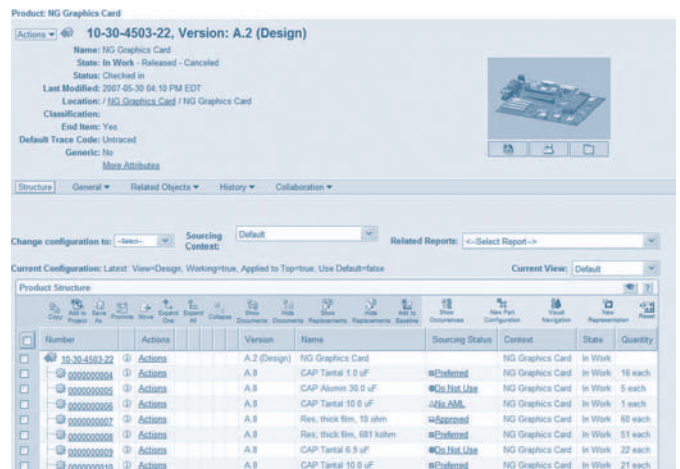
- Automatically calculate a sourcing grade for an internal part, based on an analysis of its approved manufacturer list
- Create rules for part grading based on supplier, sourcing context and commodity codes or classification

### AML/AVL Definition and Change Management

- Markup and apply changes to manufacturer and vendor parts
- Create new designs using a standardized New Part Introduction process
- Make design changes using a standardized Manufacturing Change Order process

### Define Manufacturers and Vendors

- Manage status of manufacturers and vendors (i.e., approved, pending, obsolete)
- Provide your organization with detailed contact information, status, and associated documents



Manage the sourcing status of each component in your assembly.

### Define Default Supplier Preferences

- Use workflow to automate new supplier introduction process
- Identify default preferences based on part classification and context
- Automatically update your supplier preference list using configurable rules
- Develop predefined reports on supplier metrics

### Platform Support

- Server Operating Systems:
  - Microsoft Windows (32-bit and 64-bit): XP, Vista, 2003 Server
  - Unix (32-bit and 64-bit): Solaris, HP-UX, AIX
  - Linux (64-bit): Red Hat Enterprise Linux 4
- Browser: Internet Explorer 6.0 and 7.0, Mozilla Firefox v2.0 and higher
- Database: Oracle 10g and SQL Server 2005
- Languages: English, Chinese (Traditional), Chinese (Simplified), French, German, Italian, Japanese, Korean, Spanish

For the most up-to-date platform support information, please visit: [www.ptc.com/partners/hardware/current/support.htm](http://www.ptc.com/partners/hardware/current/support.htm)

Note: The timing of any product release, including any features or functionality, is subject to change at PTC's discretion

©2007, Parametric Technology Corporation (PTC). All rights reserved. Information described herein is furnished for informational use only, is subject to change without notice, and should not be construed as a guarantee, commitment, condition, or offer by PTC. PTC, the logo, Pro/ENGINEER, and all PTC product names and logos are trademarks or registered trademarks of PTC and/or its subsidiaries in the United States and in other countries. All other product or company names are property of their respective owners.