

# Windchill® Workgroup Manager for UGS® NX™

Delivering the power and benefits of Windchill to the NX environment

Designers can perform everyday design tasks in their familiar MCAD environment while using Windchill to manage NX data throughout its lifecycle.

Managing NX data within Windchill allows you to capture and control all your design information within a single enterprise environment, manage the data under a single product structure, and easily leverage that information across the extended organization in a controlled manner.

## Key Benefits

### Improve Collaboration

- Fully incorporate the use of NX data in product development processes which span multiple organizations
- Extend the sharing of design data beyond engineering, departmental and corporate boundaries using standard Internet technology

### Improve Data Quality

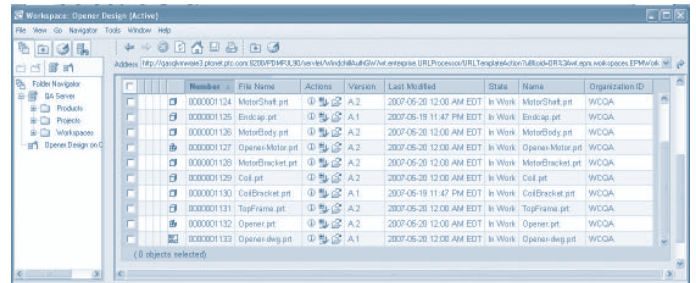
- Eliminate mistakes associated with duplicate or incomplete information by managing data from multiple MCAD and ECAD/EDA systems in a single, controlled location under the umbrella of a single product structure

- Centralize the management of business processes, such as change control

- Provide all relevant groups with accurate, up-to-date, product content information that's held in a single location

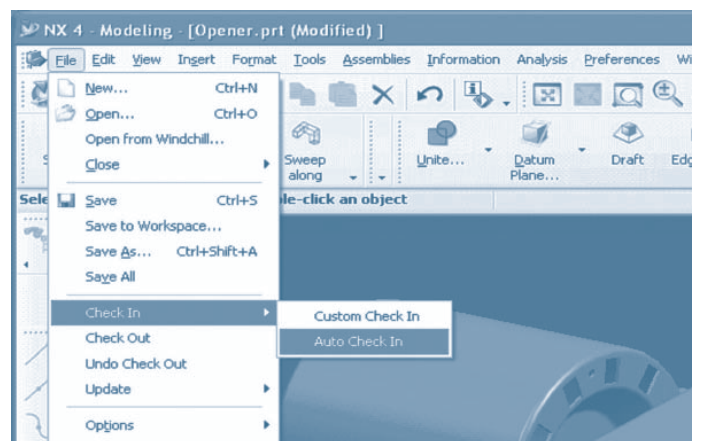
### Increase Enterprise Efficiency

- Reduce the number of systems required in product development by providing one system that can manage multiple sources of data (e.g., different CAD and documentation formats)
- Enforce standard design processes across multiple design projects and organizations



Number	File Name	Actions	Version	Last Modified	State	Name	Organization ID
0000001124	MotorShell.prt		A.2	2007-05-20 12:00 AM EDT	In Work	MotorShell.prt	WCGA
0000001125	Endcap.prt		A.1	2007-05-19 11:47 PM EDT	In Work	Endcap.prt	WCGA
0000001126	MotorBody.prt		A.2	2007-05-20 12:00 AM EDT	In Work	MotorBody.prt	WCGA
0000001127	Opener-Motor.prt		A.2	2007-05-20 12:00 AM EDT	In Work	Opener-Motor.prt	WCGA
0000001128	MotorBracket.prt		A.2	2007-05-20 12:00 AM EDT	In Work	MotorBracket.prt	WCGA
0000001129	Coil.prt		A.2	2007-05-20 12:00 AM EDT	In Work	Coil.prt	WCGA
0000001130	CoilBracket.prt		A.1	2007-05-19 11:47 PM EDT	In Work	CoilBracket.prt	WCGA
0000001131	TopFrame.prt		A.2	2007-05-20 12:00 AM EDT	In Work	TopFrame.prt	WCGA
0000001132	Opener.prt		A.2	2007-05-20 12:00 AM EDT	In Work	Opener.prt	WCGA
0000001133	Opener-dwg.prt		A.1	2007-05-20 12:00 AM EDT	In Work	Opener-dwg.prt	WCGA

The Windchill Workgroup Manager for NX understands NX data and file types, and the relationships that can exist between that data.



Embedded Windchill Workgroup Manager menu option within the NX environment.

### Improve Engineer Productivity

- Improve efficiency by reusing designs and reducing the number of design steps
- Embed Windchill actions within the NX application, so designers can focus on design activities rather than data management
- Minimize engineer interruptions by utilizing background processes to upload files to Windchill, thus allowing designers to continue using NX without having to wait for database actions to complete

## Features

### Support Key NX Data and Features

- Store the NX file type (.prt) in Windchill and recognize these files as being authored in NX
- Recognize NX Part-to-Part (WAVE and IPE) dependencies and representation of those references in the Windchill environment
- Open files directly in NX when browsing or searching Windchill
- Copy or rename data in the Windchill environment while still maintaining referential integrity between NX files

### Exchange Attribute/Property Information between NX Files and the Windchill Environment

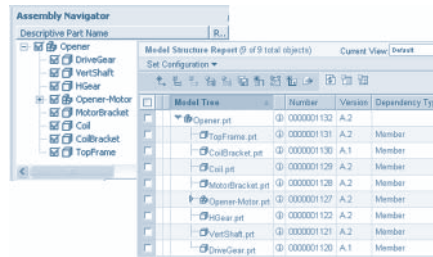
- Expose NX attributes to Windchill for searching purposes
- Make Windchill attributes available within NX for purposes such as displaying values on drawing borders
- Allow NX attributes to be edited in the Windchill environment
- Eliminate the need to enter attributes in both the Windchill and NX environments
- Reduce the amount of time designers spend entering information in NX by having certain attributes, such as information on drawing borders, automatically populated by Windchill

### Integrate the NX Environment within Windchill and its Related Enterprise Processes

- Utilize Windchill tools for managing NX data within the product structure, development process and lifecycle
- Enable Check-In and Check-Out of named design baselines, latest configurations, or criteria such as latest released configuration or effectivity date
- Manage NX data within the Windchill engineering change management process
- Eliminate BOM redundancy and errors by synchronizing the enterprise BOM with the NX structure
- Allow NX data to be part of an enterprise BOM structure that can contain data from many different CAD systems
- Enable version control on NX data to record complete traceability of changes and design development
- Enable concurrent development, as Windchill can track all related activities and convey that information to other members of the design team
- Utilize status icons to quickly inform NX designers and other users about the condition of NX data within Windchill

### Embed Windchill in the NX Application

- Open NX files, stored in Windchill, directly from NX
- Perform key Windchill actions, such as Open, Check-In and Check-Out, directly from the NX environment



Model Tree	Number	Version	Dependency Type
Opener prt	0000001130	A.2	
TopFrame prt	0000001131	A.2	Member
CoilBracket prt	0000001130	A.1	Member
Coil prt	0000001129	A.2	Member
MotorBracket prt	0000001128	A.2	Member
Opener-Motor prt	0000001127	A.2	Member
VerShaft prt	0000001122	A.2	Member
VerShaft prt	0000001121	A.2	Member
DriveGear prt	0000001120	A.1	Member

Assembly structure in NX and corresponding model structure in Windchill.

- Inform NX users on any relevant Windchill events via pop-up messaging system
- Upload NX files to the Windchill database using background processes
- Use a comprehensive set of preferences to personalize and streamline your NX interaction with Windchill

### Exchange and Share Design Data in a Collaborative Environment

- Provide a single source of product information and leverage design information outside the design environment
- Enable controlled sharing of NX data across the enterprise
- Utilize generic visualization collaboration tools to provide visibility of NX designs to the entire enterprise, regardless of whether users have access to or knowledge of NX
- Make NX design data available to external audiences who have proper system access

### Platform Specifications

- Prerequisite:
  - Windchill® PDMLink®, Windchill® ProjectLink™
- Operating Systems
  - Microsoft Windows (32-bit): XP
  - Unix(64-bit): Solaris(SPARC Platform), HP-UX 11i
- Browser: Internet Explorer v6.0 and 7.0, Mozilla Firefox v1.7.8 (UNIX only)
- Languages: English, Chinese (Traditional), Chinese (Simplified), French, German, Japanese, Korean, Spanish and Italian.

For the most up-to-date platform support information, please visit: [www.ptc.com/partners/hardware/current/support.htm](http://www.ptc.com/partners/hardware/current/support.htm)

NOTE: The timing of any product release, including any features or functionality, is subject to change at PTC's discretion.

© Copyright 2007, Parametric Technology Corporation (PTC). All rights reserved under copyright laws of the United States and other countries. Information described herein is furnished for informational use only, is subject to change without notice, and should not be construed as a guarantee or commitment by PTC. PTC, the PTC Logo, The Product Development Company, Windchill, and all PTC product names and logos are trademarks or registered trademarks of PTC and/or its subsidiaries in the United States and in other countries.